



Single Solution - Entire Business



## Company

**Revol** is a fast growing process based business management software solutions provider. Revol established in 2012 by a group of professionals having more than fifteen years of experience in various industries like distribution, services, manufacturing, laboratories, Informatics etc.

**Revol** defines, designs and delivers technology-enabled business solutions for leading companies and provides a complete range of services by leveraging our domain and business expertise and with leading technology providers.

## Vision

To become the global leader in process based solution provider for various business industries.

## Mission

To provide a single web-based integrated business solution for entire business with the power of traditional applications used by the world's largest companies, but at a fraction of the cost and complexity.

Values

R	Revolution in Technology
E	Efficiency in Operation
V	Value for Money
O	Optimization in Process
L	Longer in Life Cycle





## Business Benefits

- Process Streamlining
- Identifying Process Black Holes
- Transparent Scorecard
- Right People at Right Place
- Customer Trust Selling
- Smart Marketing
- Intelligent Order Processing
- Balance Scorecard
- Advanced Reporting
- Single Solution – Entire Business

## Key Features

- Instant visibility from corporate to subsidiary.
- Real-time financial and operational consolidation.
- Rapid, cost-effective deployment to every business unit.
- Global Access – Work from anywhere.
- Reduces IT costs by 50 % + – While delivering automated upgrades.
- Configurable Process Flow – Minimize customization.
- Configurable RBS – Multiple role setting for single user.
- Configurable E-Mail, SMS, Reminder.
- Real Time Dashboards .
- Advanced Reporting – Dynamic reporting tool.
- Complete Audit Trail – Easy data traceability.

## Business Solution

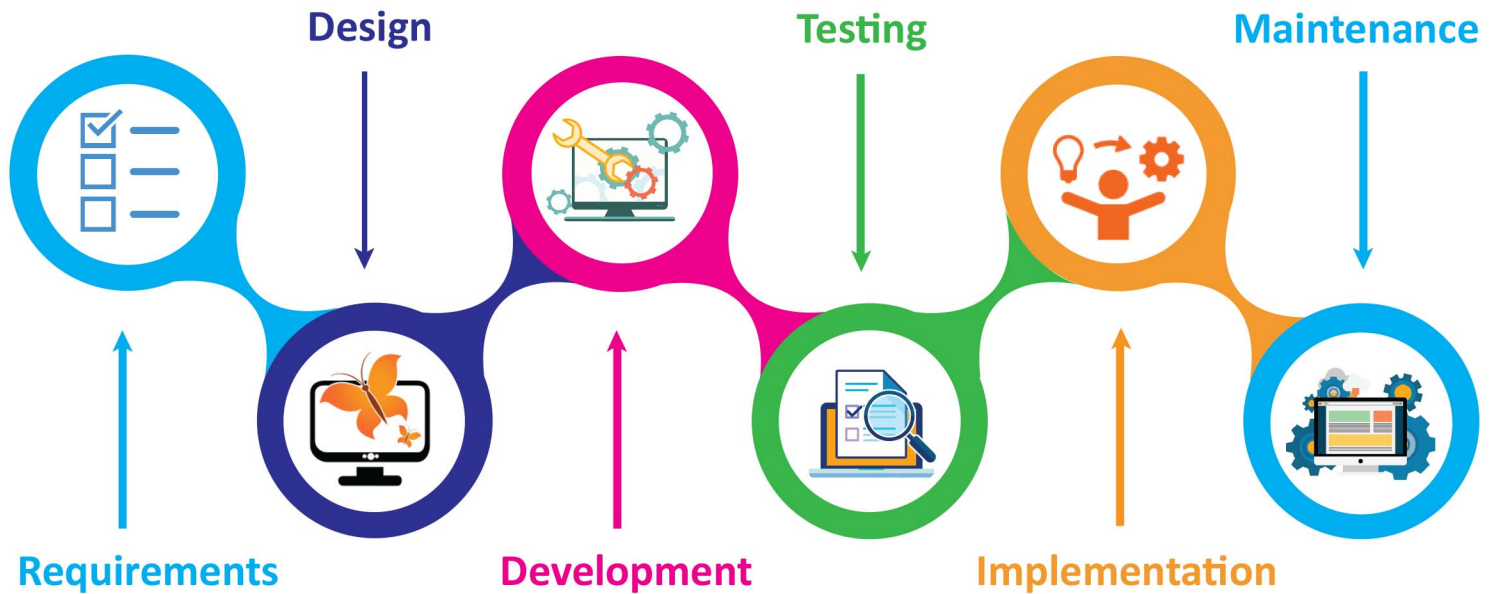
Revol Business Suite including HRM+, CRM+, ERP, Finance and Intelligent Reporter can operate in various industries like Distribution, Manufacturing, Software, Services & Construction. No two industries manage their business alike. They may share some common business requirements but their unique combination of industry, market and their internal process necessities need a product like Revol Business Suite that can be configured to meet their specific organizational requirements.

## Lab Solution

Revol Lab Solution including LIMS, Integrator, Asset Management System, Gas Calculator, Statistical Quality Control (SQC), Intelligent Reporter, and TOA can operate in various industries like Academic, Petrochemical, Pharmaceutical, Healthcare, Forensic, Environmental, Testing, and Clinical & Life Science without major customization.



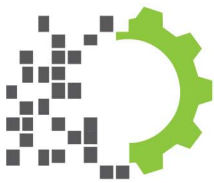
# Software Development



## Revol Services

Revol is a fast growing provider of cloud-based business management software. Revol is formed by a group of professionals having more than fifteen years of experience in various industries like distribution, services, manufacturing, Analytical, Healthcare and Informatics area.

Revol expertise in Microsoft Dot Net, JAVA, JQuery, JS, Angular JS, Microsoft SQL Server, My SQL, Oracle, Crystal Reports, SSRS Reports and extends its services in maintenance and support of other ERP systems including Data Migration, Report Generation, Dashboard Development, Application Changes.



Digital Transformation



Cloud Services



Mobility



Business Analytics



Usability Engineering



Customer Support



ERP



Enterprise Integration



Salesforce



Application Management



Testing Services



Oracle Knowledge

# Revol Key

## BUSINESS SOLUTION



### Revol Business Suite

Revol Business Suite is the world's leading Process Based ERP Solution for global business. It manages multiple subsidiaries, business units and legal entities all from a single cloud based ERP system. It helps in streamlining the processes to optimize the cost and enhance production. Revol Business Suite is a comprehensive business management solution that provides small & mid-size organizations end-to-end industry specific functionality. The real-time information and 360-degree view of the business we have with Revol Business Suite have been extremely valuable. Our time savings are immense and we have real-time access to our most critical data.

### Revol CRM

Revol CRM (Revol Customer Relationship Management) delivers a real-time 360-degree view of your customer. Revol CRM provides a seamless flow of information across the entire customer lifecycle from lead through to opportunity, sales order, fulfillment, renewal, upsell, cross-sell, and support. It is one place to store all customer information means your conversations are always personal, relevant, and up to date. Revol Sales Force Automation (SFA) powers your sales organization with integrated sales processes from opportunity, upsell and quote management to sales forecasting, order management, fulfillment, and sales commission.

### Revol ERP

Revol ERP gives companies the tools they need to accelerate growth and drive innovation. Revol ERP delivers the proven, comprehensive financial management capabilities required to grow a changing, complex business. Revol order management capabilities help streamline your order processing by eliminating manual bottlenecks, preventing errors and establishing a smooth flow from sales quote to order fulfillment ensuring timely invoicing and payment. Revol order and billing management capabilities integrate your sales, finance and fulfillment teams—improving quote accuracy, eliminating billing errors, strengthening revenue recognition processes and driving fulfillment accuracy and efficiency.

### Revol HRMS

Revol HRMS is designed for small and medium sized businesses. This human resource management system (HRMS) software features HR employee data management, applicant data management, job data management, employee training data management, leave management, appraisal management, over-time management, expense management, easy payroll processing and more..



# Products

## LAB SOLUTION

### LIMS



### AMS



### SQC



### INTEGRATOR



### REPORTS



## Revol LIMS

Revol LIMS is a single solution for entire lab. The state-of-the-art out of box solution is tailored to manage an organization's complete laboratory information into one system with complete data integrity and compliance to regulatory requirements.

## Instrument Integrator

Instrument Integrator is a single solution for entire lab instruments automation. The state-of-the-art out of box solution is tailored to integrate an organization's complete laboratory instruments data into one system with complete data integrity and compliance to regulatory requirements.

## Revol AMS

AMS is a complete asset management system which can cover Installation, Calibration, Preventive Maintenance, Breakdown Maintenance, Asset Audit, Parts & Consumables Consumptions, Sample Analysis etc... Revol integrated asset management solution gives you a 360-degree view of service team-helping to improve efficiency and lower service costs.

## Revol SPC / SQC

SPC / SQC (Statistical Process / Quality Control) charts offer users the chance to monitor the very heartbeat of their processes. By collecting data they can predict performance. Taking sample readings from a process seems straightforward.

## Key Industries



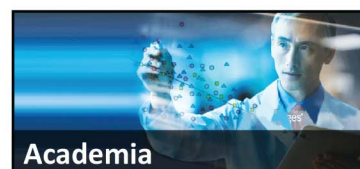
Distribution



Manufacturing



Life Science



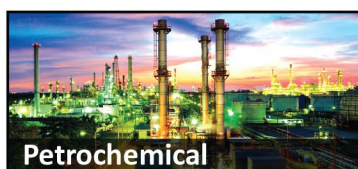
Academia



Environmental



Healthcare



Petrochemical



Testing

# Enterprise Software Programming Training

## Revol

Follows a vision of redefining people career through quality job oriented software education, hence we have built-up a training portfolio

### “Enterprise Software Programming”

for IT Professionals towards providing HRM, CRM, ERP & LIMS product development in the area of HTML, Dot Net, JAVA, MS SQL Server, My SQL and Oracle. The key element of this training is an integrated approach involves a phased approach towards software development cycle.

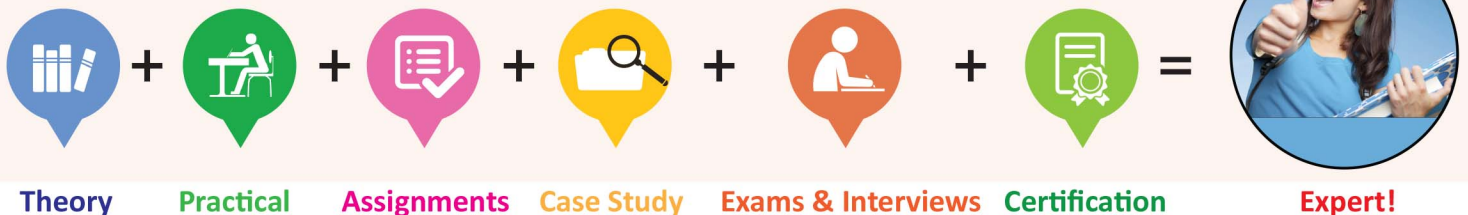


## Get Trained in Revol ESP and become an Expert

- Special focus in class room for practical classes on each topic
- 10+ years experience for DOT NET / JAVA trainers
- Every student will be working on project
- Complete study material with hardcopies
- 10 to 12 students in batch, one-to-one training
- HRM, CRM, ERP & LIMS Product Experience



## Revol Training Process



"Students can able to develop Web Based Applications using the N-Tier Architecture. Ability to think and solve queries related to object oriented programming. Students will get confidence to work on any New Microsoft .Net and JAVA Technologies."



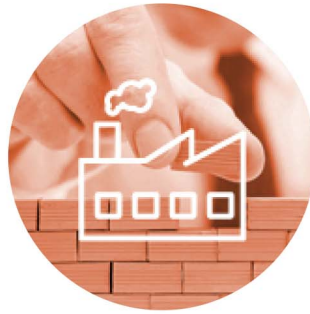
# Complete Solution for Your Business



**REVOL SUCCESS**



**EVERY ROLE**



**EVERY INDUSTRY**



**EVERY BUSINESS SIZE**

## Enhance Business

Connect to your customers in a whole new way. Build more meaningful and lasting relationship, better understand their needs, identify new opportunities to help, address any problems faster and deploy customer-focused apps lightning fast. With a single view of every customer interaction you can sell, service and market like never before.



**Sales Force**

**Support**



## Increase Efficiency, Productivity & Customer Satisfaction

Accelerate case resolution time by providing support with complete customer visibility with appropriate case assignments. Support teams can access customer information anytime, anywhere to drive customer satisfaction and retention.

## Reduce Costs with Effective ERP

Accelerate the order-to-cash process by tying sales, finance and fulfillment to pricing, sales order management and returns management. Simple, automated order-to-cash processing improves your cash flow. Keep your customers satisfied and engaged with native CRM functionality.



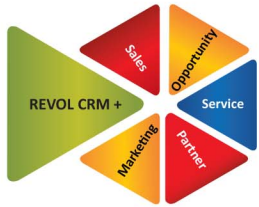
**ERP**



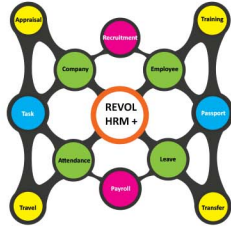
Single Solution - Entire Business

## Business Solution

### CRM



### HRM



### ERP



### ACCOUNTS



### INVENTORY



## Lab Solution

### LIMS



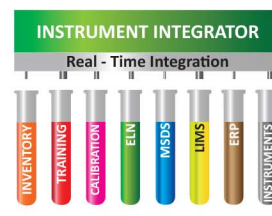
### AMS



### SQC



### INTEGRATOR



### REPORTS



## Key Clients



Armed Forces  
of Saudi Arabia



IndianOil



AGU

